

---

# East Texas Gas Producers Association

Carthage  
Gas Plant  
Field Trip

David Skinner



July 14, 2009

# Under the Private Securities Litigation Act of 1995

---

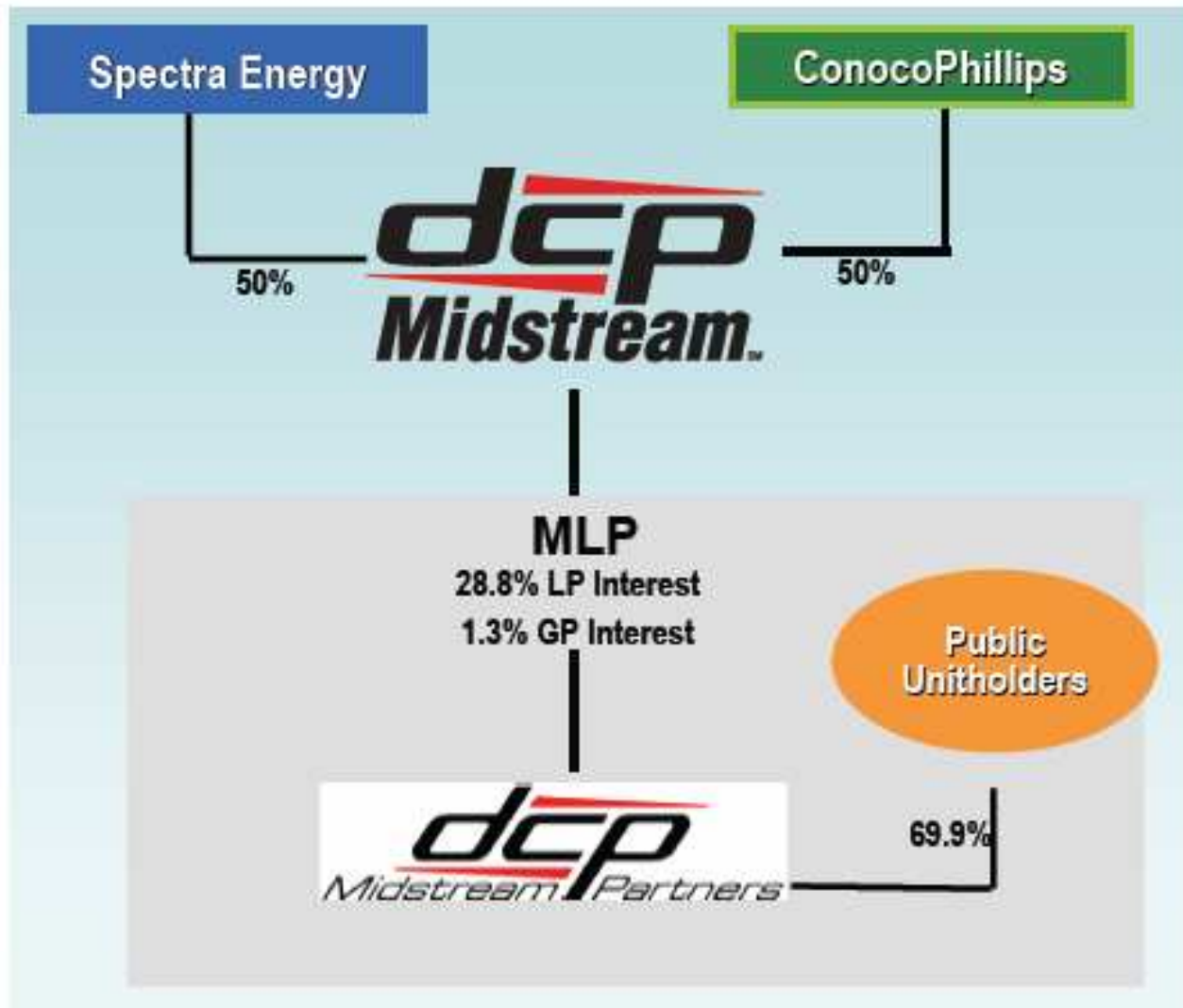


This presentation may contain forward looking information which is subject to risks and uncertainties, including, but not limited to, changes in the regulatory environment impacting the gathering and processing industry, the level of creditworthiness of the Company's counterparties, the Company's ability to access the debt markets, the amount of collateral required to be posted from time to time in the Company's transactions, changes in commodity prices, interest rates, demand for the Company's services, weather and other natural phenomena, industry changes including, the impact of consolidations, changes in competition, the effect of the Company's accounting policies, and other risks described in the Company's Securities and Exchange Commission filings.

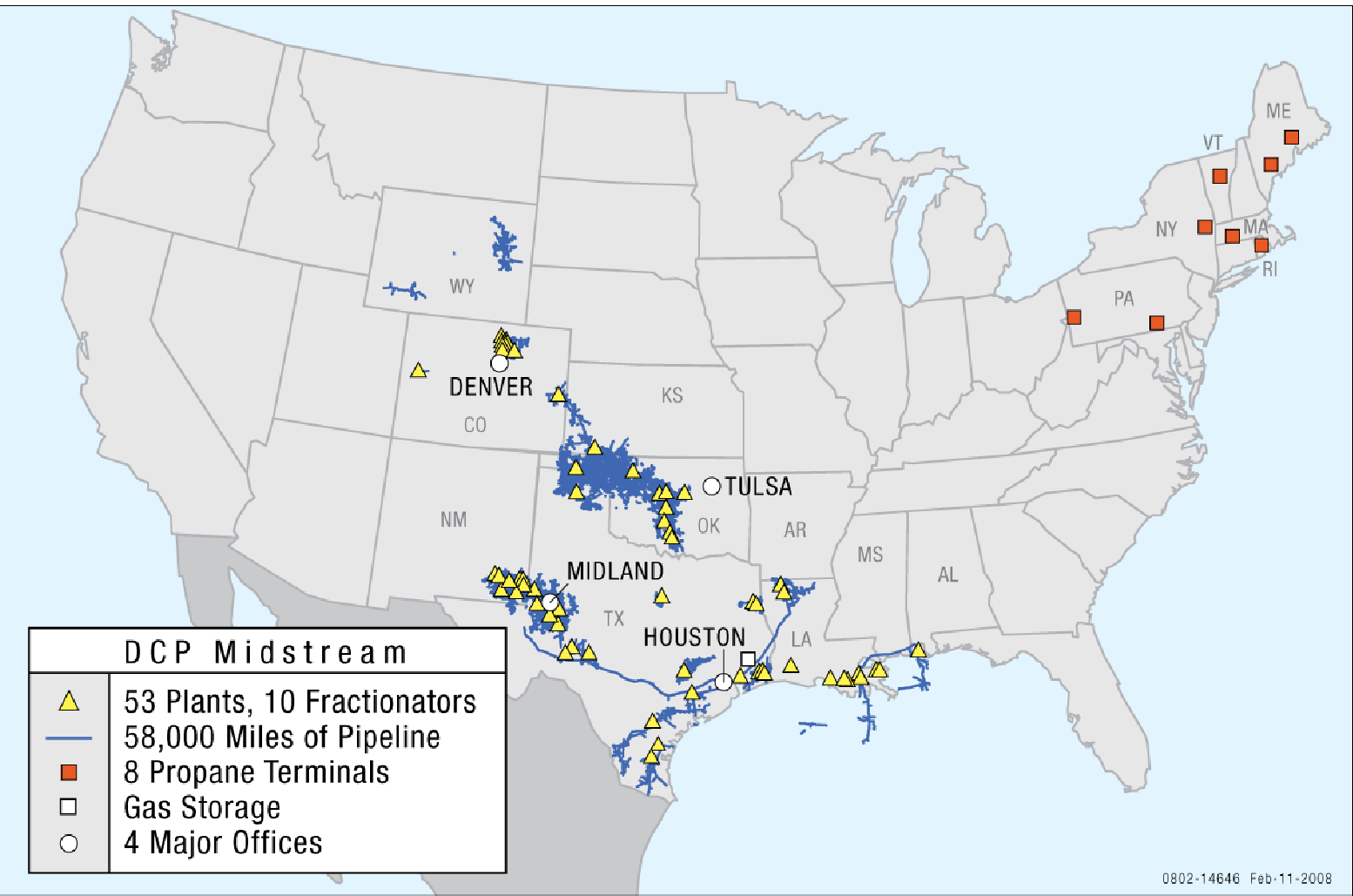
## **Regulation G**

This document may include certain non-GAAP financial measures as defined under SEC Regulation G. In such an event, a reconciliation of those measures to the most directly comparable GAAP measures is included in the printed version of these slides which can also be downloaded from our investor relations Web site [www.dcpmidstream.com](http://www.dcpmidstream.com).

# Who We Are



# Assets Map



# Developments

---

- Feb 12 Event
- 20” Minden Field Expansion
- Reliability Enhancements
- Hub Enhancements

# Feb 12 Event





## Feb 12 Event

---

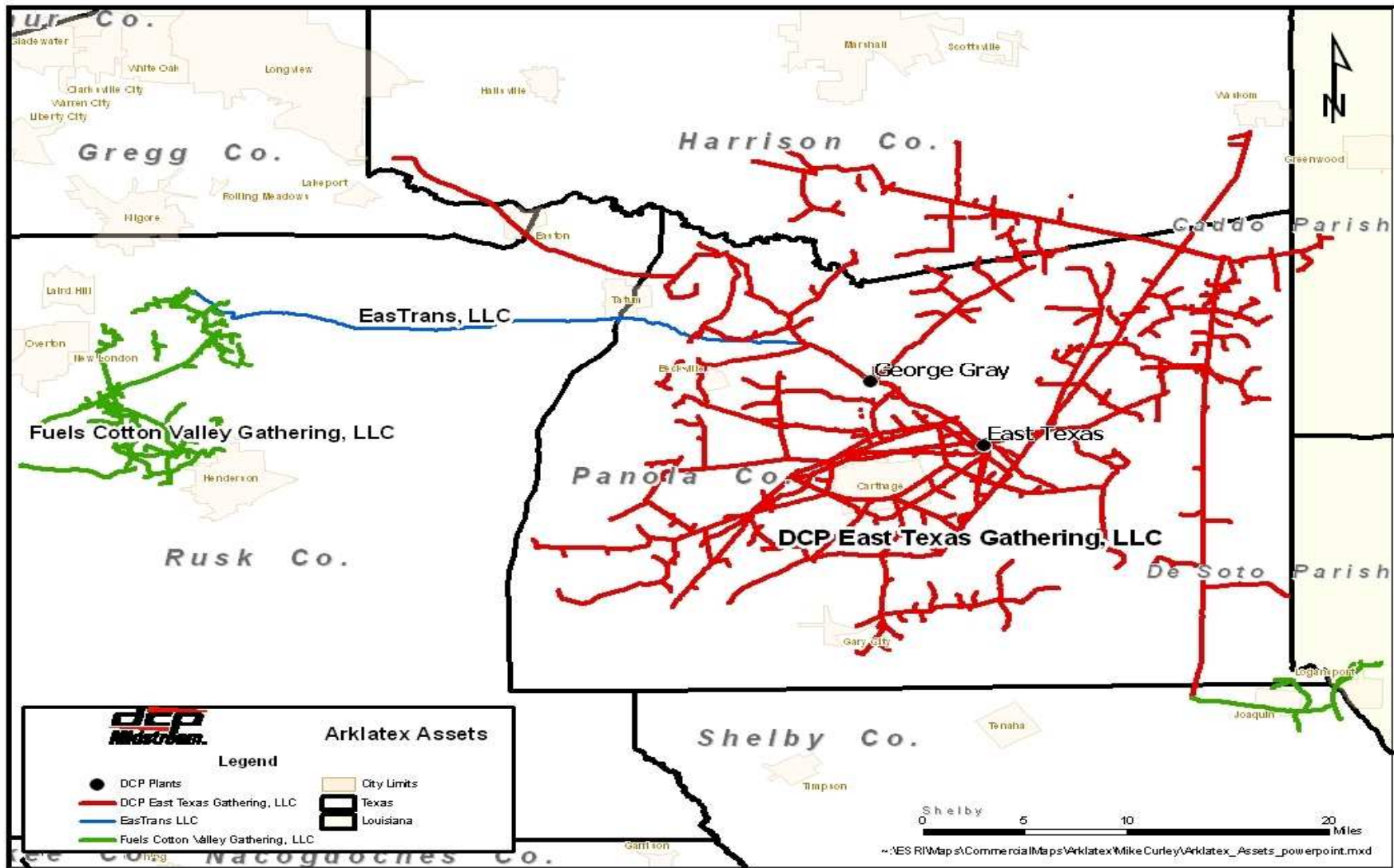
- **3<sup>rd</sup> Party Pipeline Rupture & Fire**
- **Evacuate**
- **Shut In Plant Inlet valves**
- **No Injuries**
- **Two additional 3rd Party Pipeline Ruptures & Fire**
- **Damage limited to Residue Hub Valves & Wiring**
- **Plant 1 back up in 14 days**
- **Quick Response Team**

# East Texas Complex

---

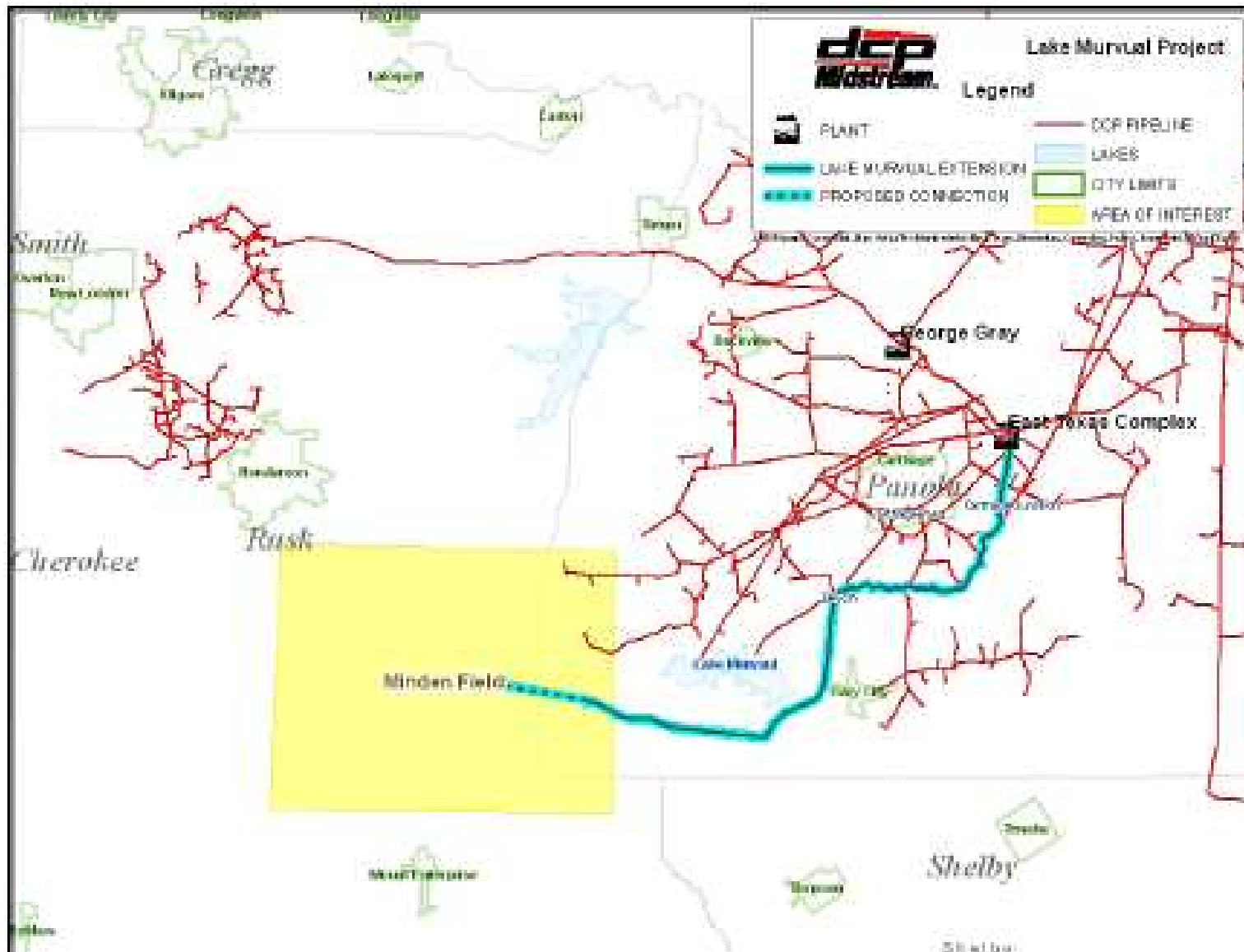
- Pipelines : 812 miles Gathering  
6 Counties/Parishes
- Plants : 5 Plants  
780 MMcf/d Capacity  
550 MMcf/d Current
- Hub: “Carthage Hub” Eastrans LLC  
1.5 BCF/d  
9 Residue Pipelines

# East Texas System Map



# Minden Field Expansion

30 Miles - 20" - 56 MM\$ - 6/09 - 1100 #

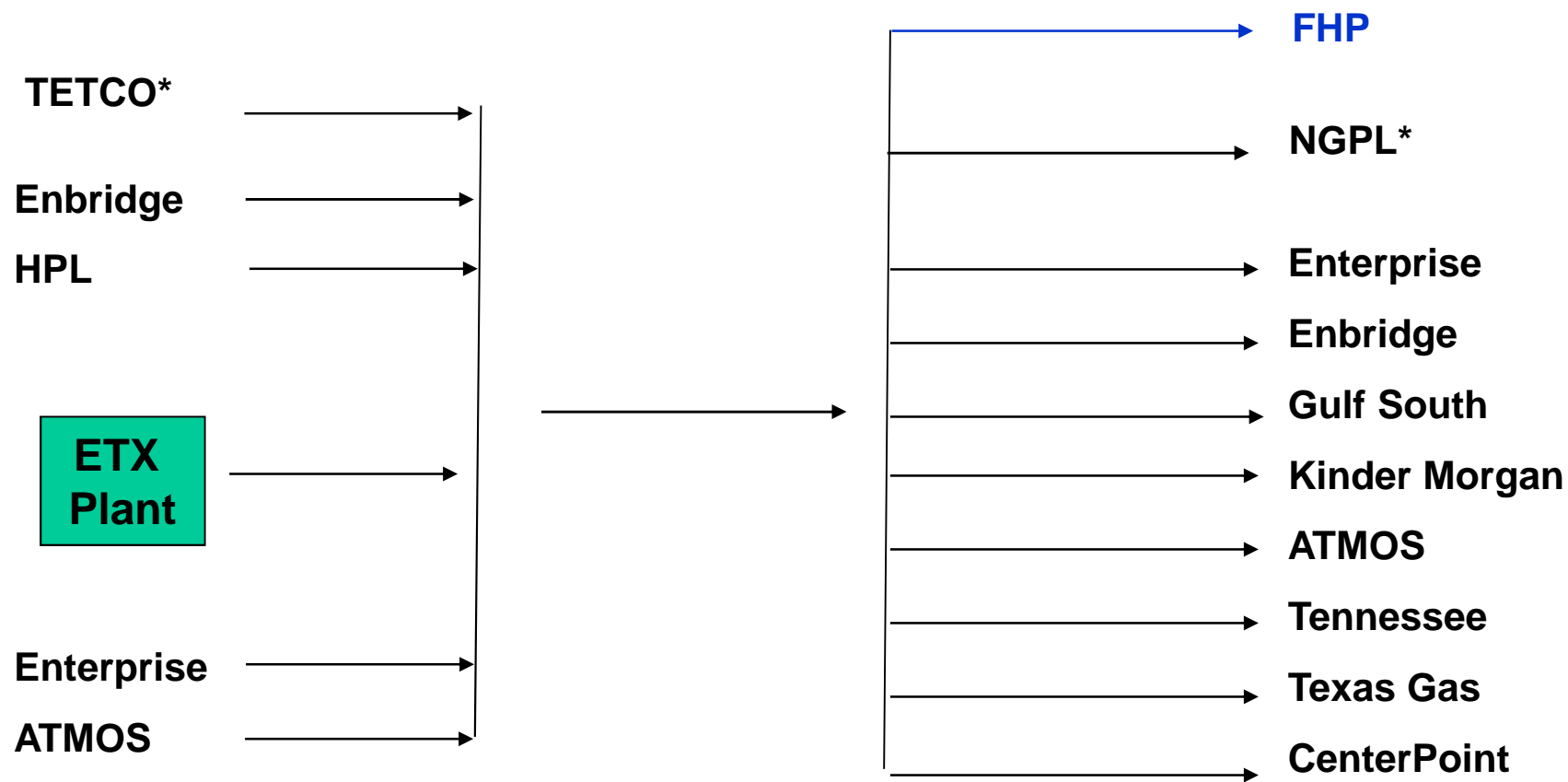


# Reliability Enhancements

---

- Carthage Yard Compression
- Inlet Liquid Handling
- +40 MM\$ over 3 yrs

# Carthage Hub



\* Currently inactive

# Plants Constructed

---

- PLANT 1
  - Built 1949 - Lean Oil Absorption
  - 1975 – Converted to Post Boost Expander
  - 1993 – Install New De-methanizer
  - 1999 – Re-design of De-methanizer
- Plant 2
  - Pre-Boost Expander
  - Built 1992

## Plants Constructed Cont.

---

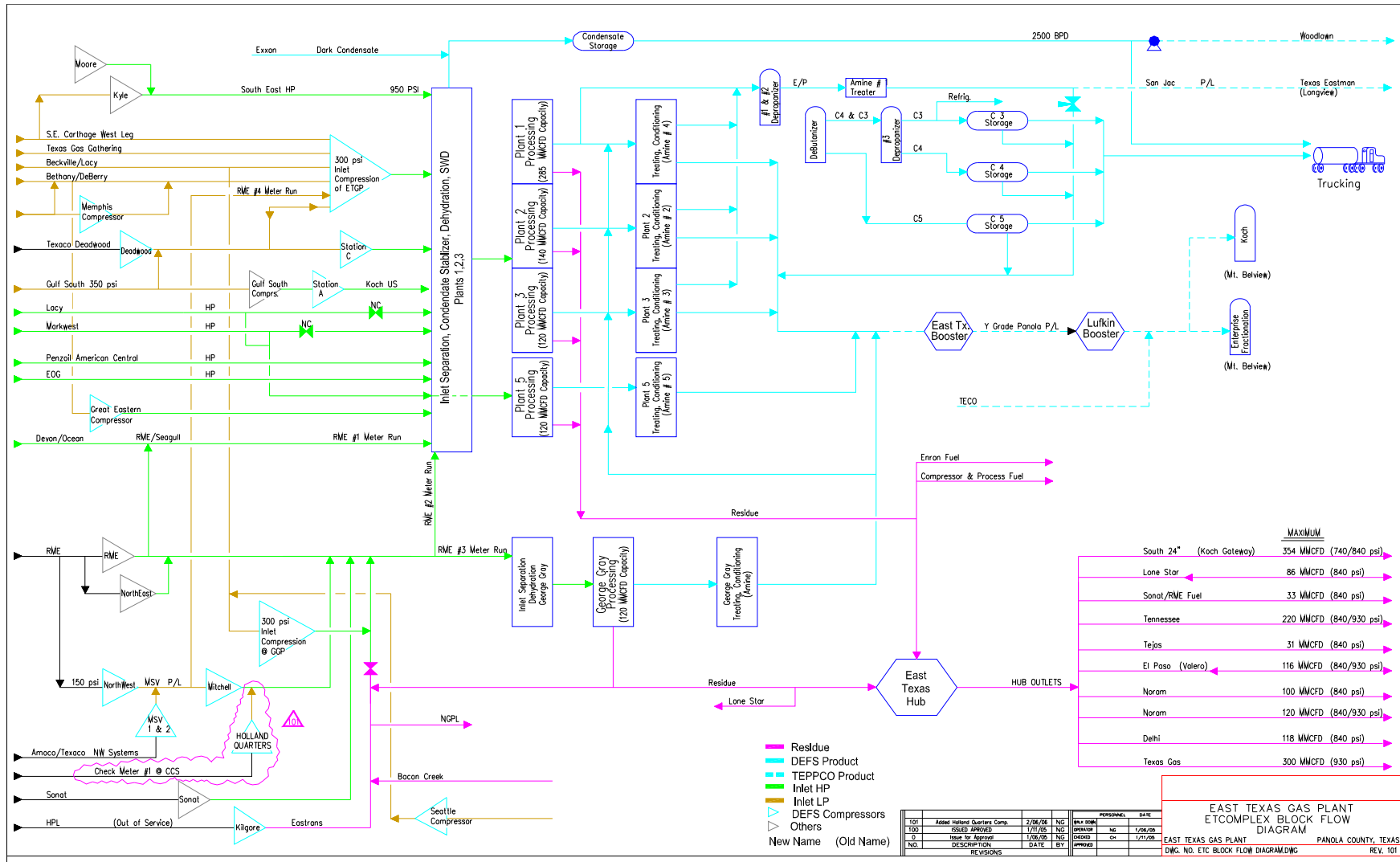
- Plant 3
  - Post Boost Expander
  - Built 1991
- Plant 4 (George Gray)
  - Post Boost Expander
  - Built 1994
- Plant 5
  - Post Boost Expander
  - Built 1999

# Complex Equipment

---

- 5 Plants
- 6 Amine Treaters
- 3 De-Propanizers
- 1 De-butanizer
- 12 Solar Residue Turbine Compressors
- 32 Plant Recip Compressors
- Controlled by a Fisher Delta V DCS

# Carthage Plant



EAST TEXAS GAS PLANT ETCCOMPLEX BLOCK FLOW DIAGRAM  
 DWG. NO. ETC BLOCK FLOW DIAGRAM.DWG  
 PANOLA COUNTY, TEXAS  
 REV. 101

# East Texas Contacts

---

- **Commercial:**
  - Brian Frederick – VP Gas Supply – 713-735-3667
  - Mike Curley – Managing Director – 713-735-3649
  - Jeff Austin – Commercial Manager – 713-735-3662
  - Mike Cobb – Commercial Manager – 713-735-3642
  - Hank Delony – Commercial Manager – 713-735-3680
  
- **Operations:**
  - David Skinner – Asset Manager – 903-694-4180
  - Gary Hastings – Plant Supervisor – 903-694-4167
  - Larry Pittman – Measurement Supervisor – 903-694-4115
  - Randy Shierry – Gathering Supervisor – 903-694-4179